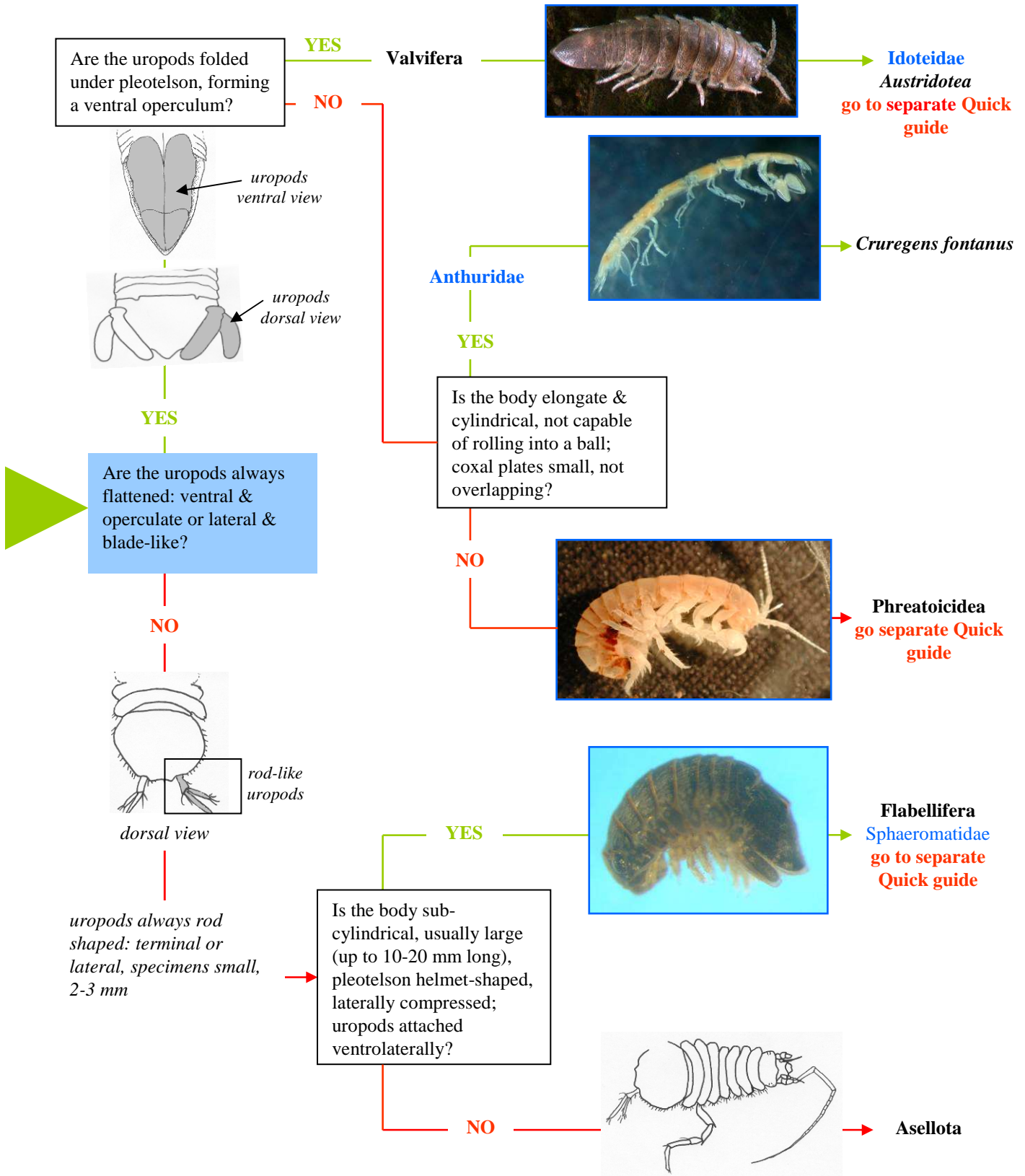


Quick guide to New Zealand freshwater Isopoda

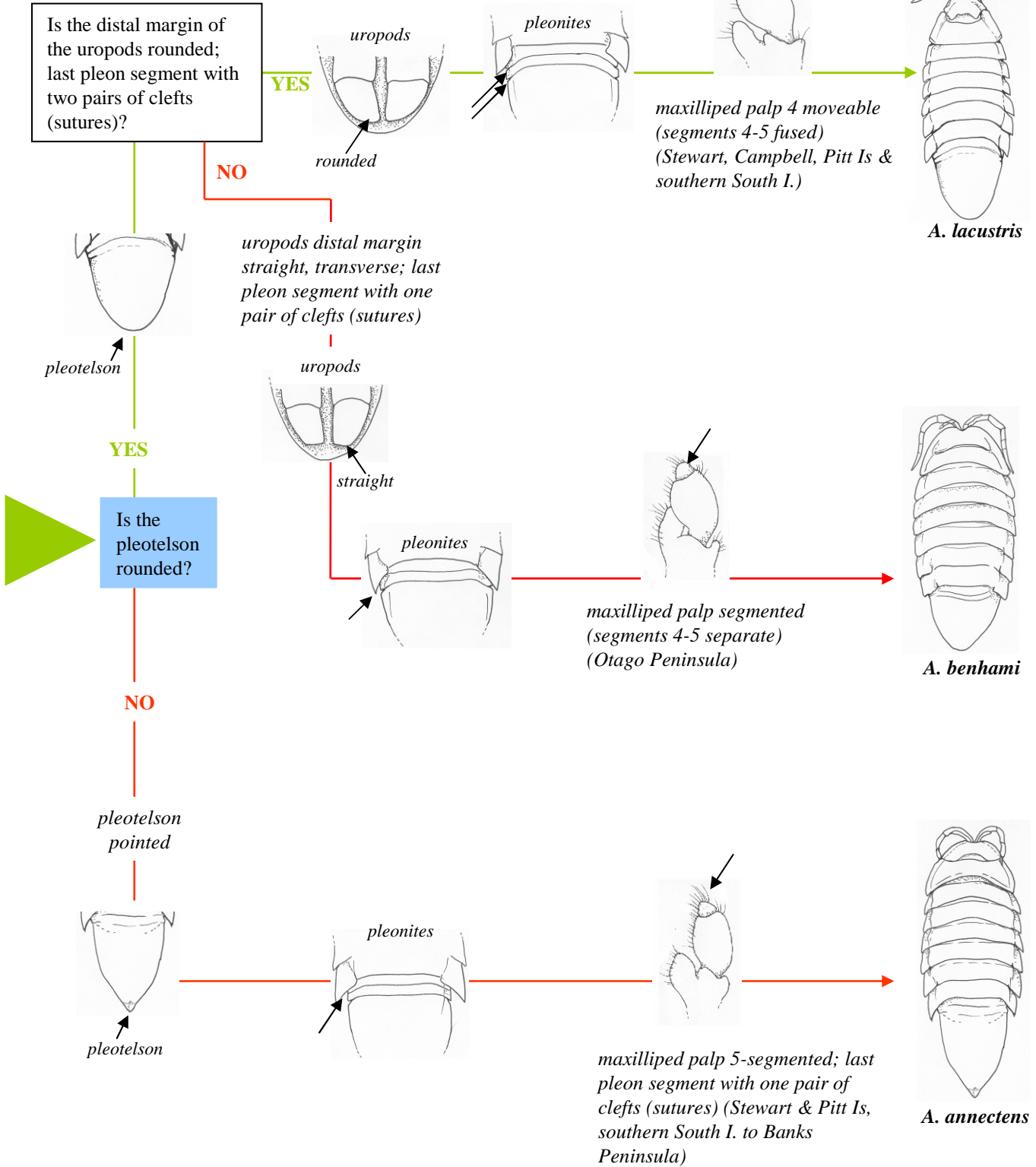
prepared by Anna Johns and Graham Fenwick (2007)



This Quick guide was funded by Terrestrial and Freshwater Biodiversity Information System (TFBIS) programme number 194.

Quick guide to *Austridotea* species of Chaetiliidae (Isopoda: Valvifera)

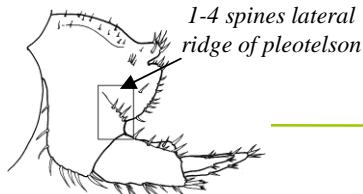
prepared by Anna Johns and Graham Fenwick (2007)



This Quick guide was funded by Terrestrial and Freshwater Biodiversity Information System (TFBIS) programme number 194.

Quick guide to Phreatoicidea (Isopoda)

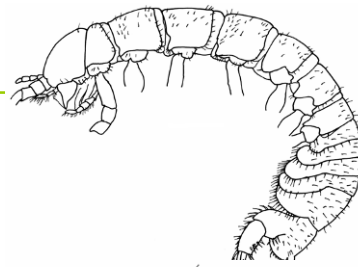
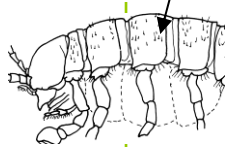
prepared by Anna Johns and Graham Fenwick (2007)



1-4 spines lateral ridge of pleotelson

YES

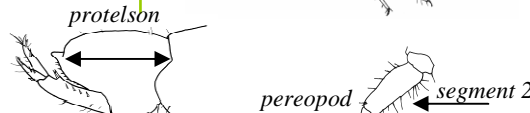
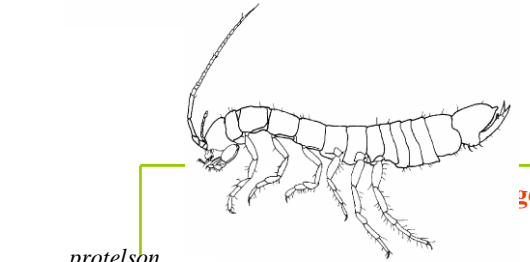
body segments 3-4 deeper than long



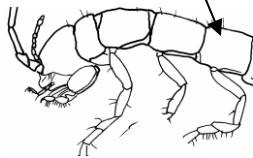
Notamphisopus
go to separate Quick guide

Are body segments 3-4 usually deeper than long; lateral ridge on the pleotelson with 1-4 spines just anterior to the uropod insertion, enlarged posteroventral spine on uropod peduncle beneath insertion of uropod rami is toothed?

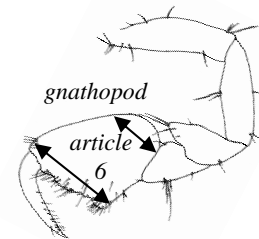
Phreatoicus
go to separate Quick guide



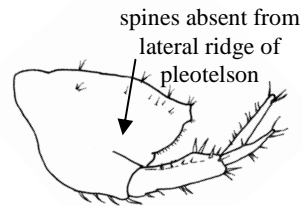
body segments 3-4 deeper not than long



NO



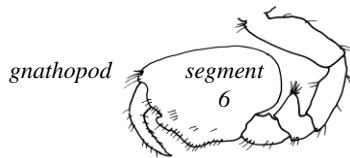
YES



spines absent from lateral ridge of pleotelson

Is gnathopod article 6 noticeably widened distally; pereopods 5-7 segment 2 slender, not wider at mid point than proximally; pleotelson longer than deep?

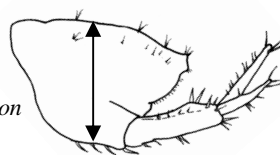
NO



gnathopod

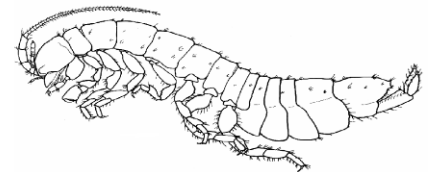
segment 6

segment 2



pleotelson

pereopod



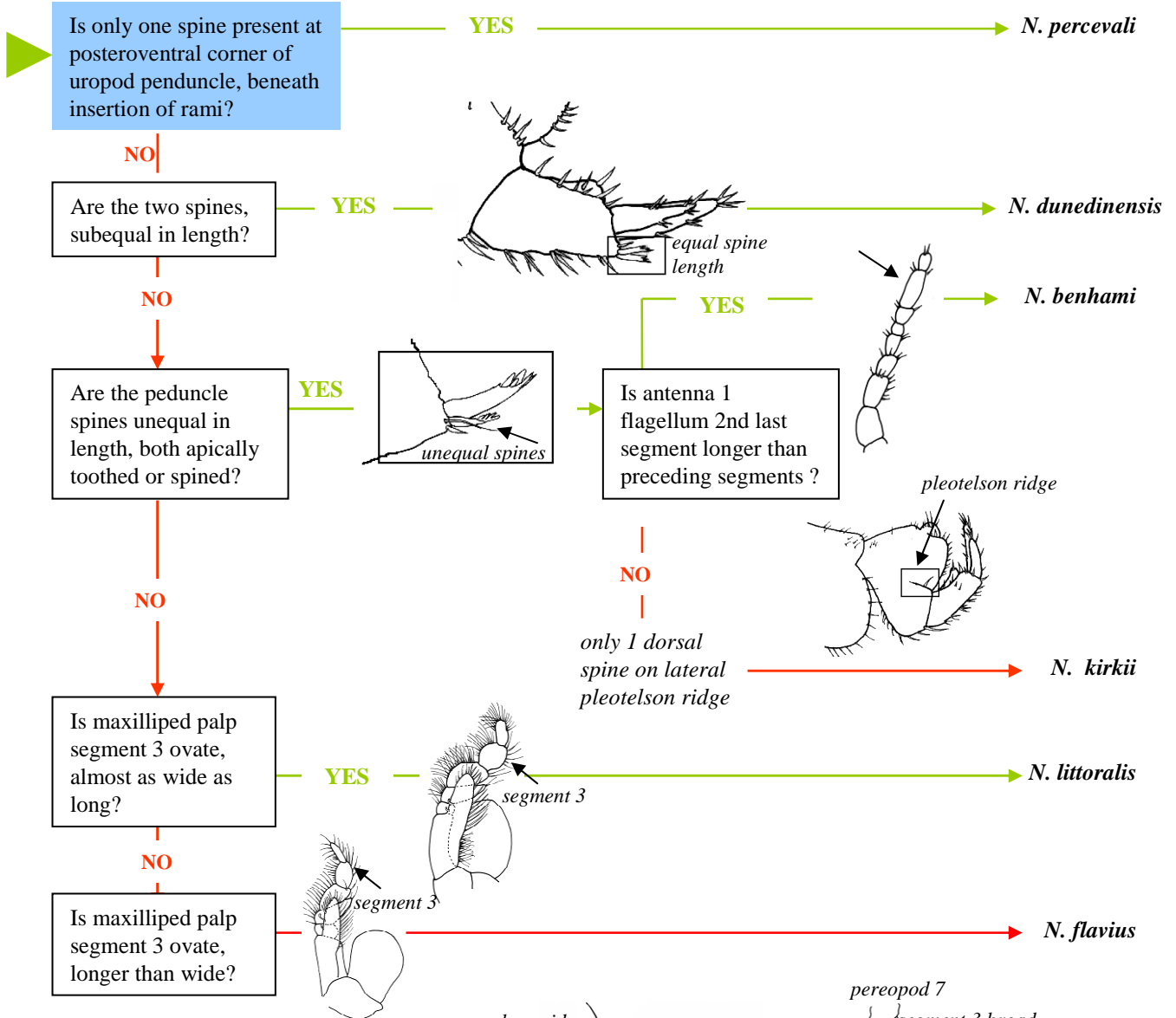
Neophreatoicus
(1 sp., *N. assimilis*)

This Quick guide was funded by Terrestrial and Freshwater Biodiversity Information System (TFBIS) programme number 194.

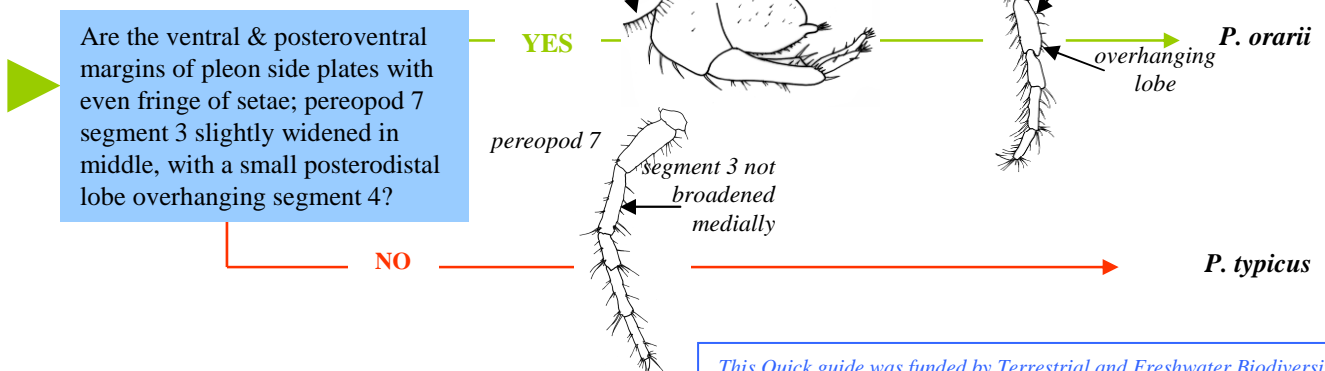
Quick guide to species of Phreatoicidea (Isopoda)

prepared by Anna Johns and Graham Fenwick (2007)

Notamphisopus



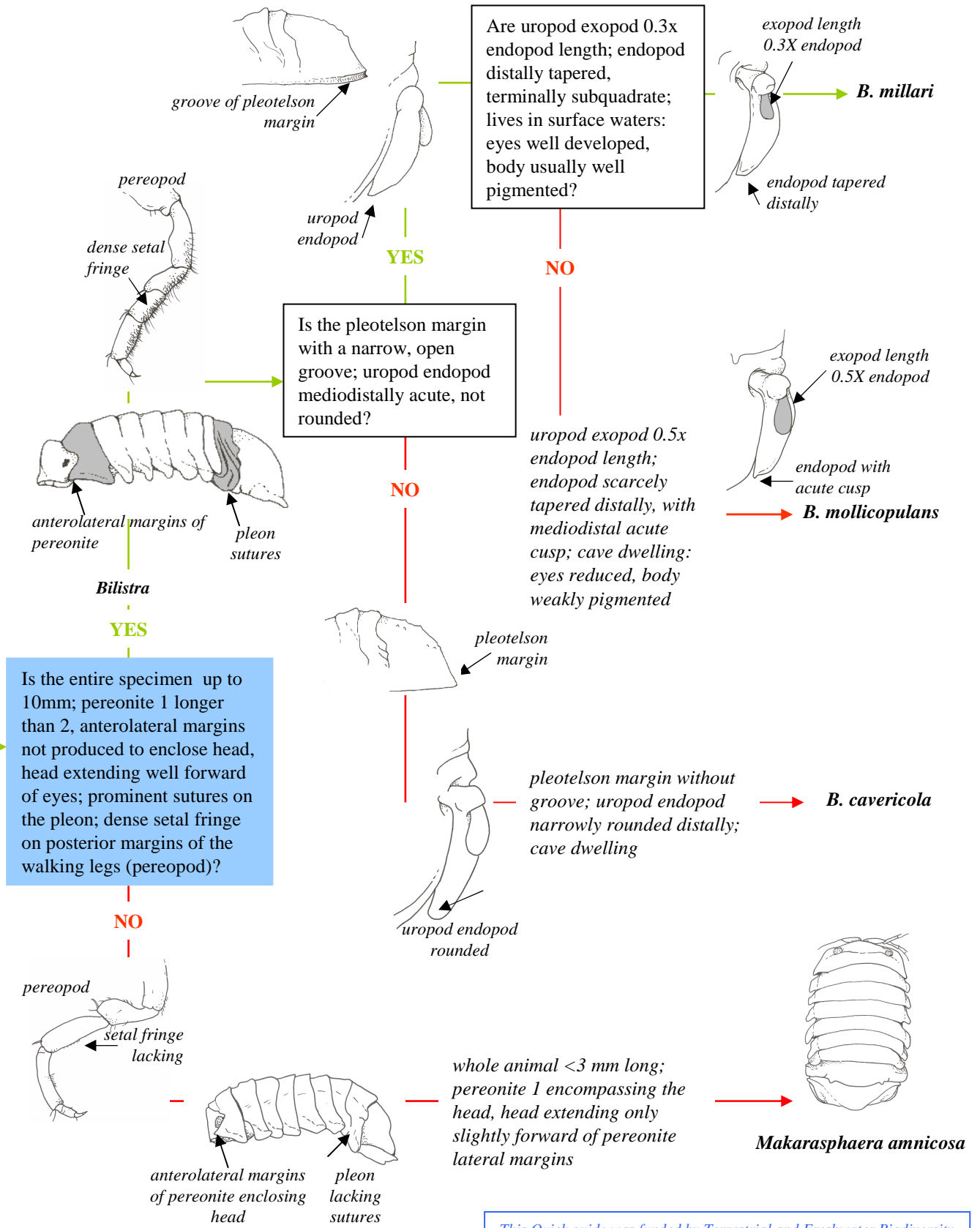
Phreatoicus



This Quick guide was funded by Terrestrial and Freshwater Biodiversity Information System (TFBIS) programme number 194.

Quick guide to species of Sphaeromatidae (Isopoda: Flabellifera)

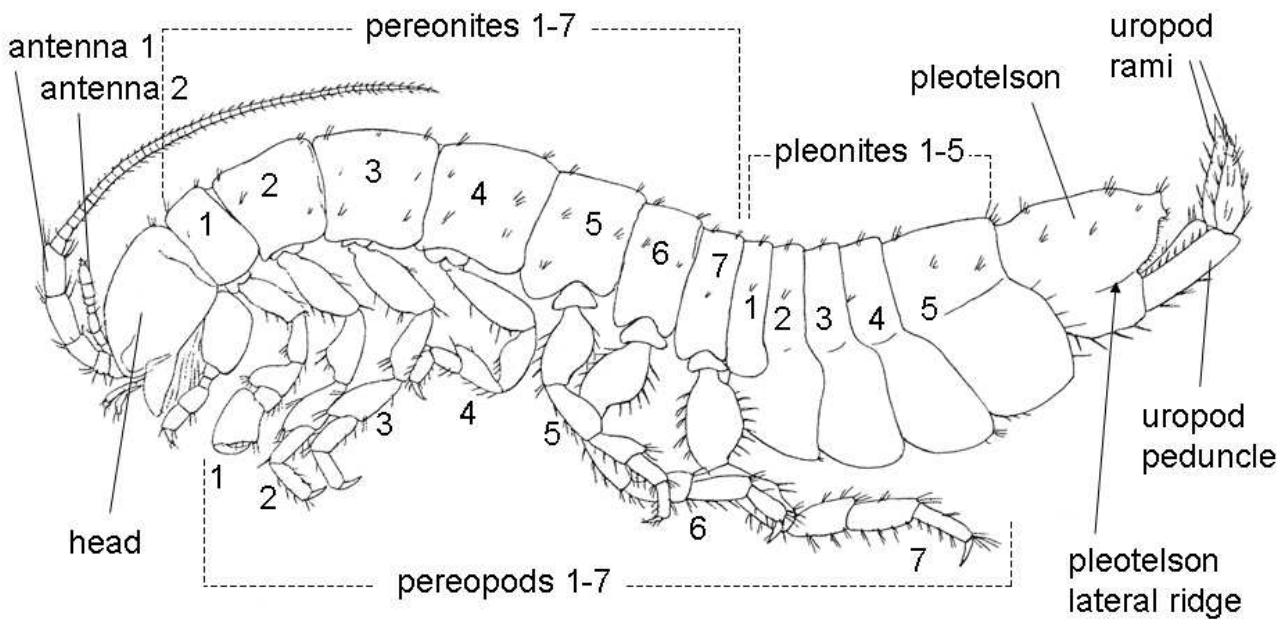
prepared by Anna Johns and Graham Fenwick (2007)



This Quick guide was funded by Terrestrial and Freshwater Biodiversity Information System (TFBIS) programme number 194.

Guide to the typical body plan of Isopoda

prepared by Anna Johns and Graham Fenwick (2007)



Neophreaticoicus assimilis (Chilton 1884)

Reference

Chilton, C 1894 The subterranean Crustacea of New Zealand with some general remarks on the fauna of caves and wells *Transactions of the Linnean Society of London (2nd Series Zoology)* 6(2) 163-284, pls 16-23.