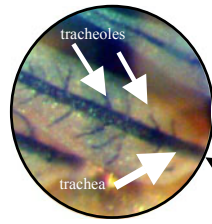
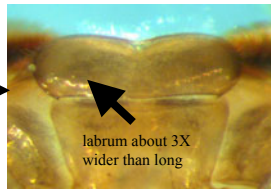


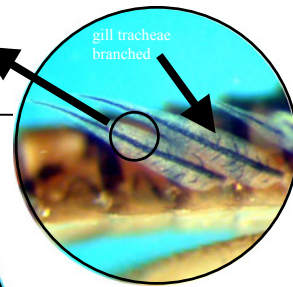
CONTINUED

Is the labrum c. 3X wider than long, & gill trachea branched?

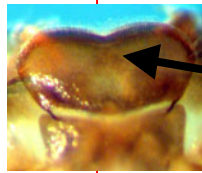
YES



close up of trachea and tracheoles

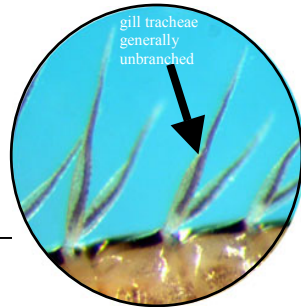
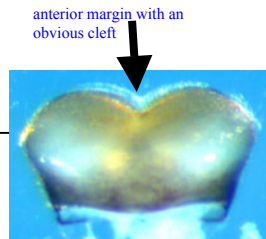


NO



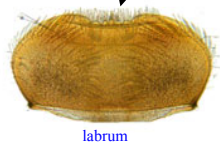
Is the anterior margin of the labrum rounded with a deep cleft, & the gill trachea unbranched?

YES

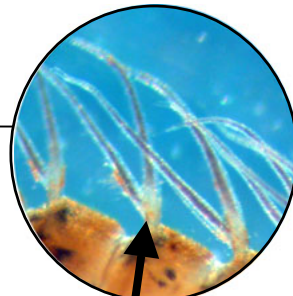


NO

anterior margin without cleft

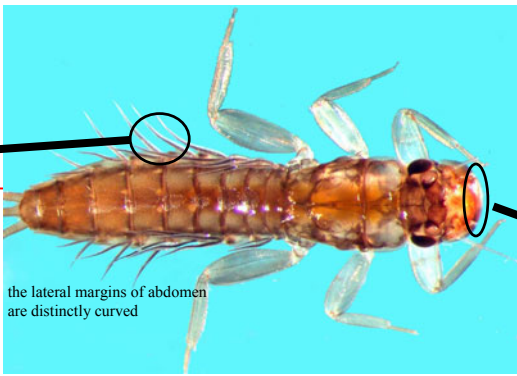
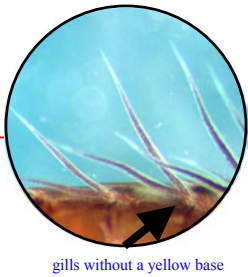


YES

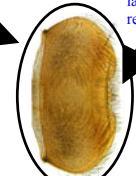


Is the larva a mottled yellow & black colour, & the base of the gills pale? Gills generally held out from the abdomen.

NO



labrum with a rectangular incision



Neozephlebia
MCI = 7