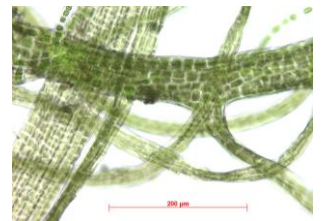
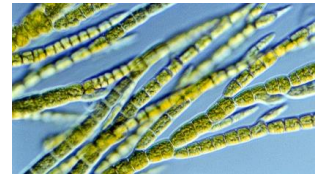
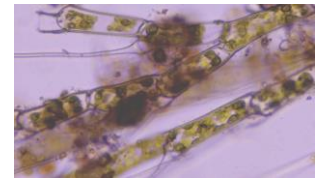
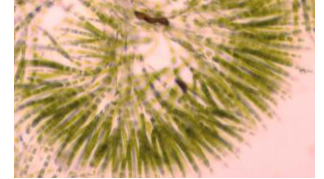
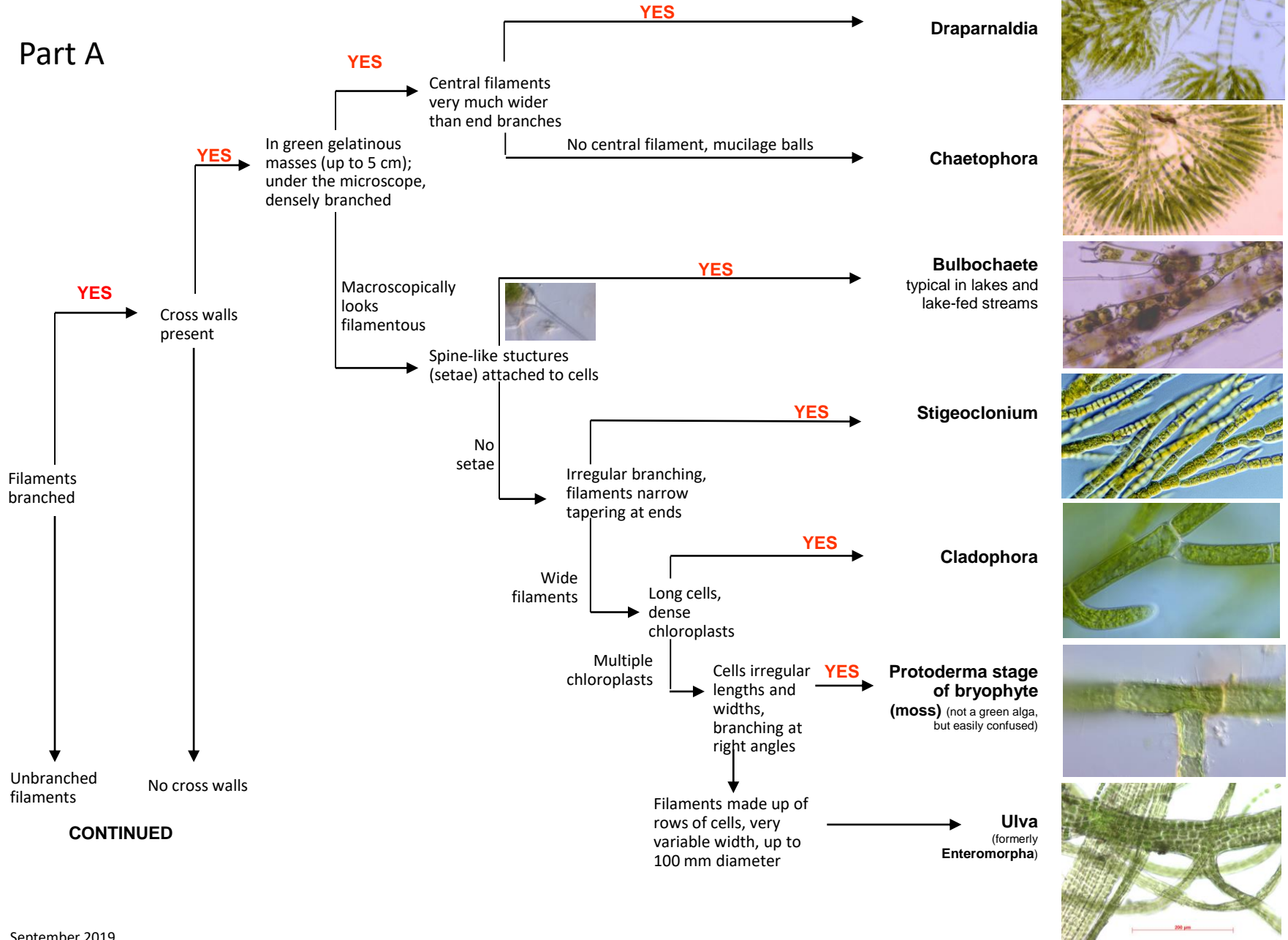


Quick-guide to common filamentous algae New Zealand fresh waters

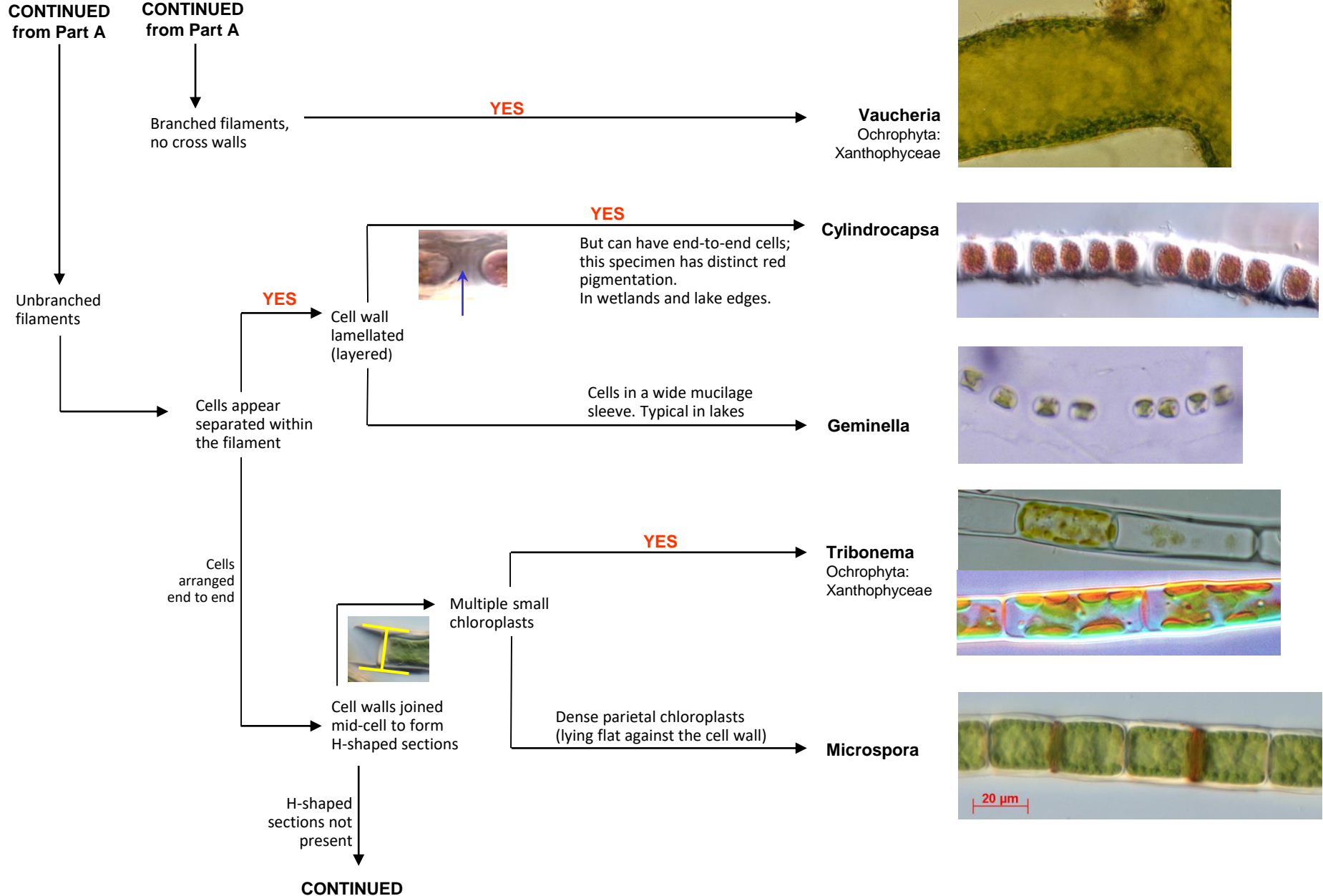
(Genera belong to Chlorophyta, except where stated otherwise)

Part A



Quick-guide to common filamentous algae

Part B



Part C

CONTINUED from Part B

Filaments not branched

Cells arranged end to end

No H-shaped sections in cell walls

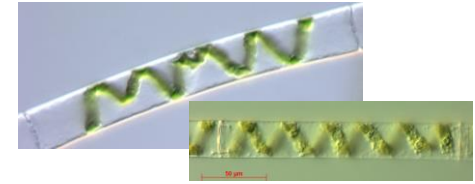
Chloroplast a lengthwise sheet or ribbon, flat or twisted

YES

Chloroplast clearly spiral

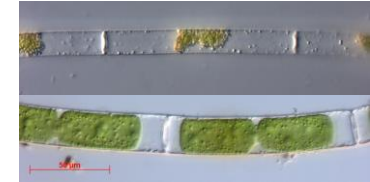
YES

Spirogyra
Charophyta:
Zygnematales



Chloroplast a lengthwise sheet

Mougeotia
Charophyta:
Zygnematales

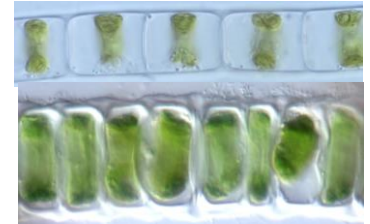


Chloroplast parietal (lying flat against the cell wall)

YES

Chloroplast a distinct ring or near-complete ring

Ulothrix



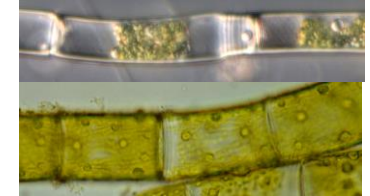
Chloroplast covering a small portion of the cell wall

Klebsormidium
Charophyta
/Streptophyta:



Chloroplast large, reticulate (like a net)
Scarring (concentric rings) on some cells

Oedogonium

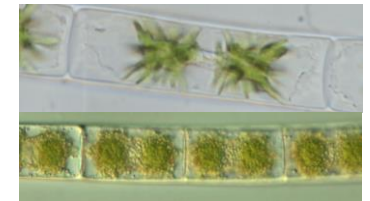


Chloroplasts otherwise

Chloroplasts in pairs

YES

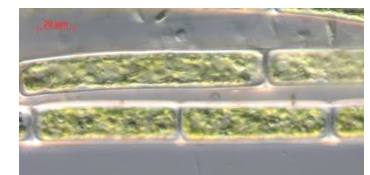
Zygnema
Charophyta :
Zygnematales



Dense reticulate chloroplasts

Very long cells

Rhizoclonium



For short cells, check *Melosira* (see diatom key)

Also check the **desmid key**: several unbranched filamentous genera with clearly demarcated cells and ornate outlines, sometimes arranged spirally along a filament.