

# KĀKAHI LIFE CYCLE

Kākahi (also known by the names kāeo and torewai) are a native species of freshwater mussel found in Aotearoa-New Zealand. Kākahi depend on native fish, because for part of their life cycle their larvae are fish parasites, attaching themselves to the gills and fins of fish.

## THERE ARE THREE SPECIES OF KĀKAHI IN AOTEAROA



*Echyridella menziesii*

The most common species, found all over Aotearoa.

⚠ At risk, declining status



*Echyridella onekaka*

A very rare species found only in the northwest of the South Island.

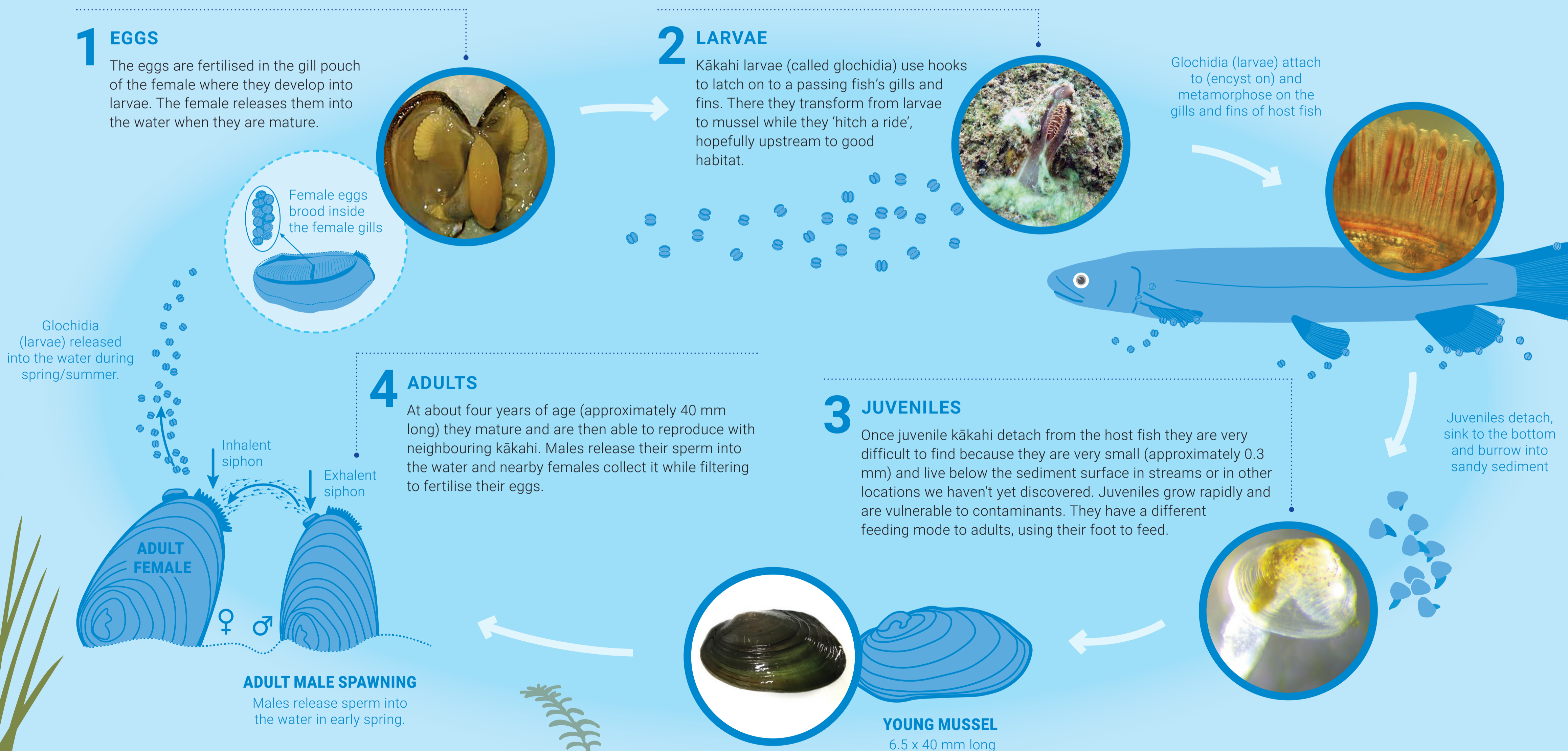
⚠ Data deficient status



*Echyridella aucklandica*

An uncommon species found in the North Island from Waikato northwards and in isolated pockets of the lower North and the South Island.

⚠ Threatened, nationally vulnerable status



For more information visit [niwa.co.nz/te-kuwaha/kakahi](http://niwa.co.nz/te-kuwaha/kakahi)

